

Bushing scaffolding 105 cm interaxial painted frame

ART. I2002
105 cm interaxial
110 cm length
Ø 48 mm tube
210 cm height



Bushing scaffolding 105 cm interaxial galvanized frame

ART. I2202
105 cm interaxial
110 cm length
Ø 48 mm tube
210 cm height



Bushing scaffolding 105 cm interaxial painted half frame

ART. I4200
105 cm interaxial
110 cm length
Ø 48 mm tube
210 cm height



Bushing scaffolding 105 cm interaxial galvanized half frame

ART. I4300
105 cm interaxial
110 cm length
Ø 48 mm tube
210 cm height



Diagonals - braces

- ART. I3001** Bushing scaffolding painted diagonal
210 cm length, Ø 27 mm tube
- ART. I3002** Bushing scaffolding painted plan cross diagonal
202 cm length, Ø 27 mm tube
- ART. I3003** Bushing scaffolding painted horizontal brace
170 cm length, Ø 27 mm tube
- ART. I3004** Bushing scaffolding 105 painted small lateral brace
105 cm length, Ø 27 mm tube
- ART. I3005** Bushing scaffolding 120 painted small lateral brace
120 cm length, Ø 27 mm tube



Diagonals - braces - galvanized

- ART. I3201** Bushing scaffolding galvanized diagonal
210 cm length, Ø 27 mm tube
- ART. I3203** Bushing scaffolding galvanized horizontal brace
170 cm length, Ø 27 mm tube
- ART. I3204** Bushing scaffolding 105 galvanized small lateral brace
05 cm length, Ø 27 mm tube



Standard painted container

- ART. I5200** Bushing scaffolding 105
(123x230x10 cm)
- ART. I5210** Bushing scaffolding 120
(123x230x10 cm)
- ART. I5211** Bushing scaffolding 105
(123x230x10 cm)
- ART. I5212** Bushing scaffolding 105
38 pieces
(123x200x10 cm)



Standard galvanized container

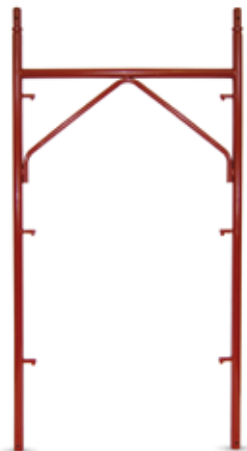
- ART. I5215** Galvanized scaffolding 105
(123x230x10 cm)





Pin scaffolding 105 cm interaxial painted frame

ART 12100
105 cm interaxial
110 cm length
Ø 48 mm tube
210 cm height



Pin scaffolding 120 cm interaxial painted half frame

ART 14205
105 cm interaxial
110 cm length
Ø 48 mm tube
110 cm height



Painted upright for parapet

ART. I4322 painted upright for parapet for pin scaffolding 1 mt tubo Ø 48 mm
ART. I4323 painted upright for parapet for pin scaffolding 2 mt tubo Ø 48 mm



Diagonals - braces

ART 13100 Pin scaffolding 105 painted diagonal 202 cm length, Ø 27 mm tube
ART 13140 Pin scaffolding 105 painted plan cross diagonal 202 cm length, Ø 27 mm tube
ART 13110 Pin scaffolding 105 painted horizontal brace 180 cm length, Ø 27 mm tube



Bushing scaffolding 120 cm interaxial painted frame

ART 12001
120 cm interaxial
125 cm length
Ø 48 mm tube
210 cm height



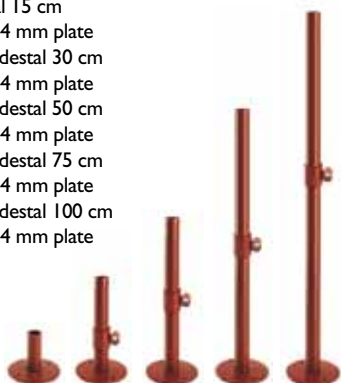
Bushing scaffolding 120 cm interaxial painted half frame

ART 14210
120 cm interaxial
125 cm length
Ø 48 mm tube
110 cm height



Painted pedestals

ART 14010 Painted fixed pedestal 15 cm Ø 40 mm tube, Ø 144 mm plate
ART 14030 Painted adjustable pedestal 30 cm Ø 40 mm tube, Ø 144 mm plate
ART 14050 Painted adjustable pedestal 50 cm Ø 40 mm tube, Ø 144 mm plate
ART 14075 Painted adjustable pedestal 75 cm Ø 40 mm tube, Ø 144 mm plate
ART 14100 Painted adjustable pedestal 100 cm Ø 40 mm tube, Ø 144 mm plate



Galvanized pedestals

ART 14011 Galvanized fixed pedestal 15 cm Ø 40 mm tube, Ø 144 mm plate
ART 14015 Galvanized adjustable pedestal 30 cm Ø 40 mm tube, Ø 144 mm plate
ART 14016 Galvanized adjustable pedestal 50 cm Ø 40 mm tube, Ø 144 mm plate
ART 14017 Galvanized adjustable pedestal 75 cm Ø 40 mm tube, Ø 144 mm plate
ART 14018 Galvanized adjustable pedestal 100 cm Ø 40 mm tube, Ø 144 mm plate



Painted upright for parapet

- ART. 14320** 1 mt painted upright for parapet for bushing scaffolding Ø 48 mm tube
ART. 14330 1 mt galvanized upright for parapet for bushing scaffolding Ø 48 mm tube



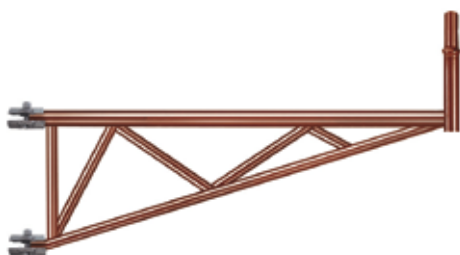
Beam frame 55 cm

- ART. 14523** Ø 48 mm tube, Ø 27 mm corner tube
ART. 14526 Galvanized version



Beam frame for short start 105 cm

- ART. 14525** Ø 48 mm painted tube
ART. 14230 Galvanized version



Beam frame for short start 155 cm

- ART. 14521** Ø 48 mm painted tube
ART. 14540 Galvanized version



Painted upright for parapet

- ART. 14321** 2 mt painted upright for parapet for bushing scaffolding Ø 48 mm tube
ART. 14331 2 mt galvanized upright for parapet for bushing scaffolding 2 mt. Ø 48 mm tube



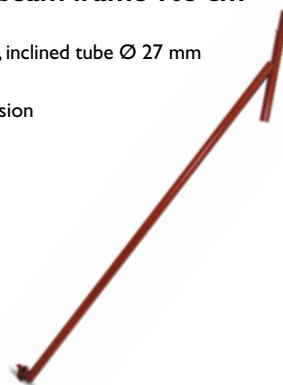
Short start tube for beam frame 55 cm

- ART. 14522** Ø 48 mm tube, inclined tube Ø 27 mm both painted
ART. 14537 Galvanized version



Short start tube for beam frame 105 cm

- ART. 14520** Ø 48 mm tube, inclined tube Ø 27 mm both painted
ART. 14231 Galvanized version



Short start tube for beam frame 155 cm

- ART. 14524** Ø 48 mm tube, inclined tube Ø 27 mm both painted
ART. 14541 Galvanized version





Cm 65 painted inferior reduced element for bushing scaffolding 105

ART. 14221 65 cm length
 Ø 48 mm tube
 210 cm height
 painted

ART. 02201 Galvanized version



Cm 40 painted inferior reduced element for bushing scaffolding 105

ART. 14222 40 cm length
 Ø 48 mm tube
 210 cm height
 painted

ART. 14227 Galvanized version



Cm 65 painted superior reduced element for bushing scaffolding 105

ART. 14220 65 cm length base
 105 cm interaxial top
 Ø 48 mm tube
 210 cm height
 painted

ART. 14226 Galvanized version



Cm 40 painted superior reduced element for bushing scaffolding 105

ART. 14223 40 cm length base
 105 cm interaxial top
 Ø 48 mm tube
 210 cm height
 painted

ART. 14228 Galvanized version



Cm 65 painted superior reduced element for bushing scaffolding 120

ART. 14224 65 cm length base
 120 cm interaxial top
 Ø 48 mm tube
 210 cm height
 painted



Cm 65 painted superior reduced element for bushing scaffolding 105

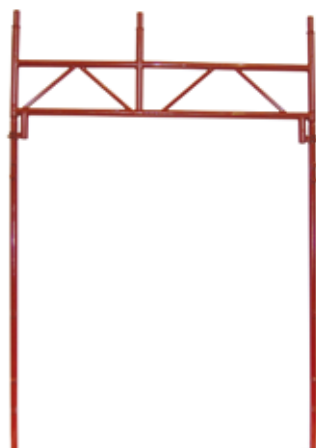
ART. 14221 65 cm length
 Ø 48 mm tube
 210 cm height
 painted



Frame large start 180/105

ART. 14225 width on base
 180 cm
 width on top
 105 cm
 height 210 cm
 tube Ø 48

ART. 14542 Galvanized version



Pin for scaffolding

ART. 15400 Pin for scaffolding Ø 12 mm
ART. 15410 Galvanized version



Slewing wheel

ART. 15500 Slewing wheel for scaffolding 200x40 mm
 Ø 40 x 190 mm tube
ART. 15510 Slewing wheel for scaffolding
 200x40 mm with brake
 Ø 40 x 190 mm tube



■ **Cm 120 oblique railing for scaffolding**

- ART. 14360** 210 cm length, Ø 48 mm tube
ART. 14229 Galvanized version



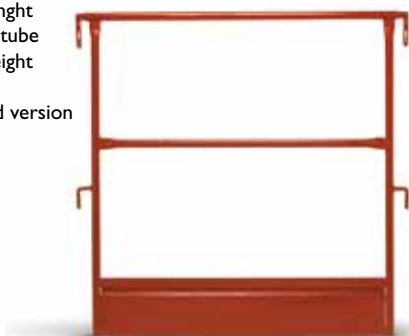
■ **Cm 360/540 beam frame**

- ART. 14500** 360 cm. bushing scaffolding 105
Ø 48 mm tube, Ø 27 mm oblique tube
ART. 14232 Galvanized version
ART. 14510 540 cm bushing scaffolding 105
Ø 48 mm tube, Ø 27 mm oblique tube
ART. 14233 Galvanized version



■ **Lateral gate for bushing scaffolding 105**

- ART. 14527** 105 cm length
Ø 27 mm tube
105 cm height
painted
ART. 14235 Galvanized version



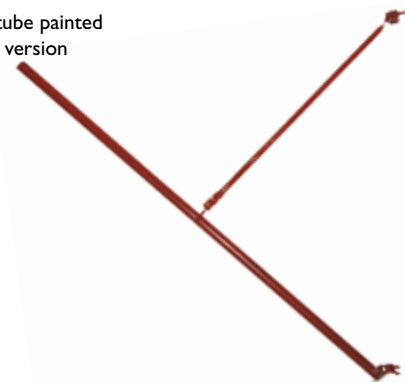
■ **Head gate cm 55**

- ART. 14529** 105 cm length
Ø 27 mm tube
105 cm height
painted
ART. 14544 Galvanized version



■ **Anti-stone shield safety system for scaffolding 150 cm**

- ART. 14361** Ø 48 mm tube painted
ART. 14362 Galvanized version



■ **Connection cross-bar for beam frames**

- ART. 14515** Ø 48 mm tube, Ø 27 mm oblique tube
ART. 14234 Galvanized version



■ **Head gates for bushing scaffolding 105 with wedges**

- ART. 14528** 105 cm length
Ø 27 mm tube
105 cm height
painted
ART. 14543 Galvanized version



■ **Plan cross diagonal for metallic boards**

- ART. 13115** 203 cm length
Ø 27 mm tube
painted
ART. 13116 Galvanized version



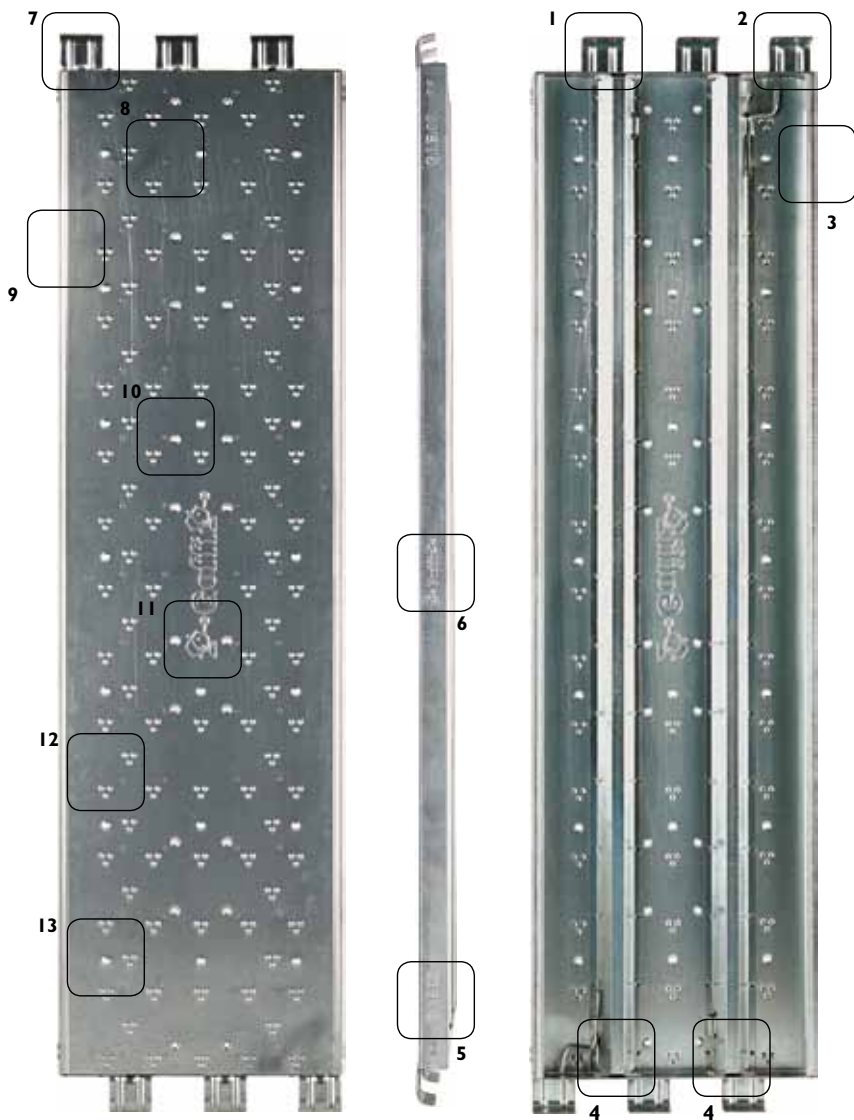
Galvanized boards for scaffolding

Galvanized board for accident prevention for scaffolding
50 cm width, 180 cm length, 5 cm height, Kg 14 weight, Kg 300/m² max. charge

ART. 11020 with hook left

ART. 11030 with hook right

ART. 15220 container for galvanized boards, 40 pieces capacity



1 Rivet system for perfect assembling between reinforced parts



2 Rivet system on the reinforced parts to avoid welding that, after some time, causes breaking or rust



3 Double edge for a safe and sure transport



4 Two reinforcing longitudinal bars



5 Year of production pressed on each profile



6 Goffi mark pressed on each profile



7 3 mm thick-pressed hooks



8 Rivet system to avoid weldings and to increase user's stability



9 Reinforced edge to help stocking



10 20 holes for a rapid water exit



11 Central Goffi mark on the board



12 Non-slip system



13 21 stability holes to increase user's stability

Tubular ladder with hooks

Ø 32 x 2 mm tube, Ø 17,9 x 1,6 mm rungs

ART. 10055 Tubular ladder with hooks for 2m galvanized scaffolding, Ø 32 mm tube

ART. 10050 2 m painted tubular ladder for scaffolding, ø 32 mm tube

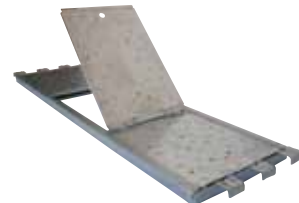


Galvanized board with trap-door

1800 mm length, 550 mm width, 50 mm thickness, approx. 23 Kg.

ART. 11012 with hook left

ART. 11035 with hook right



foot-stop flat galvanized board

ART. 11011 Foot-stop flat galvanized board.

1800 mm length, 200 mm width, approx. 4 Kg.

ART. 11013 Lateral foot-stop galvanized board.

1050 mm length, 200 mm width, approx. 2,5 Kg.

